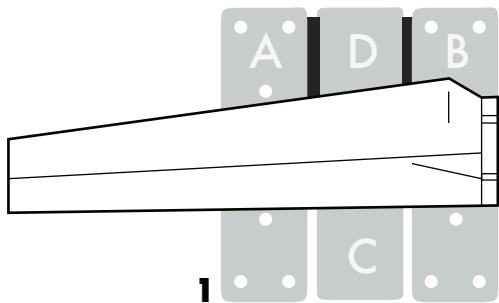
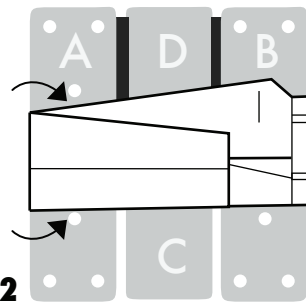


FOLD PANTS, SLACKS & TROUSERS



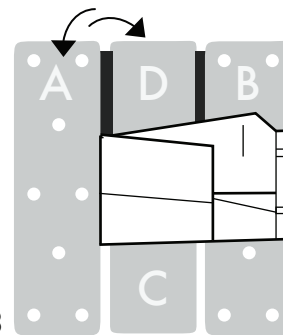
1

To start fold the pants to a uniform size at the waist, aligning the seam of each leg, front and back pockets facing upward.



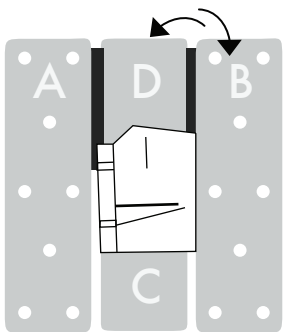
2

Place waist of pant on the Starfold, even with **Panel B**.



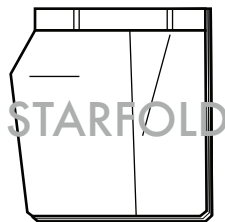
3

Fold leg in so it is even with edge of **Panel A**.



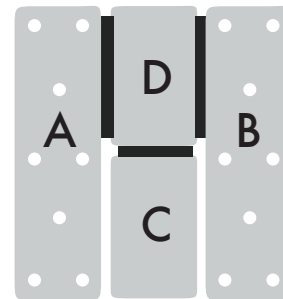
4

Flip **Panel B** to center and back



5

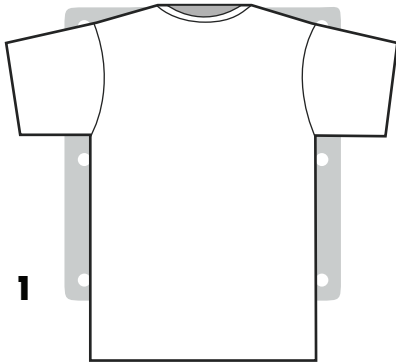
You now have perfectly folded pants!



LEGEND

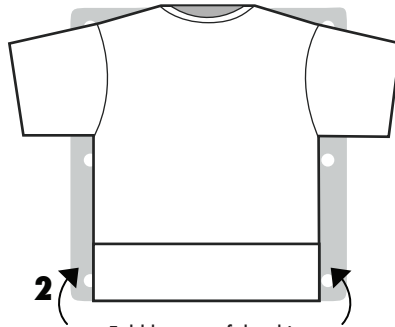
FOLD A T-SHIRT, BASIC SHIRT FOLDING

Follow these t-shirt instructions for help when folding t-shirts and short sleeved shirts



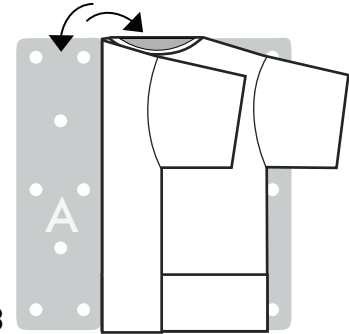
1

Place open t-shirt flat, face down on the StarFold.



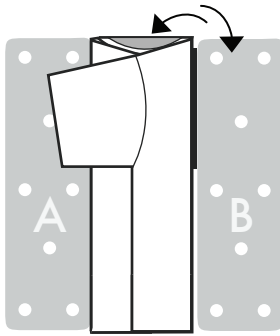
2

Fold bottom of the shirt even with bottom edge of StarFold.



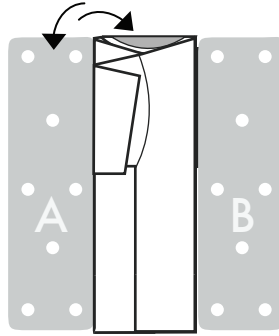
3

Fold **Panel A** to center and back.



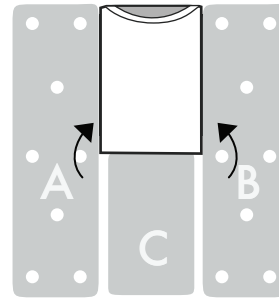
4

Fold **Panel B** to center and back.



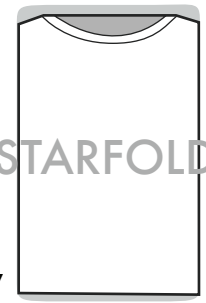
5

Fold **Panel A** to center and back (folding sleeve in).



6

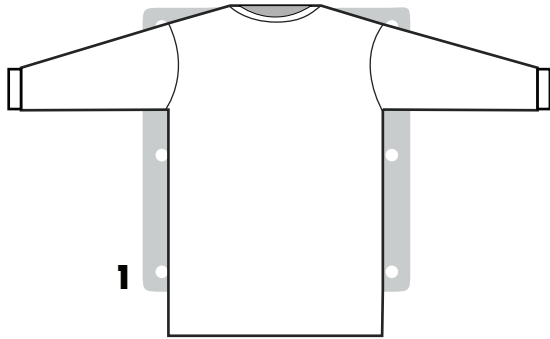
Fold **Panel C** to center and back.



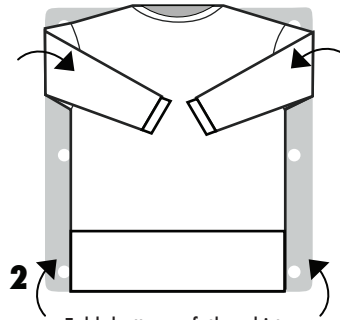
7

You now have perfectly folded t-shirt!

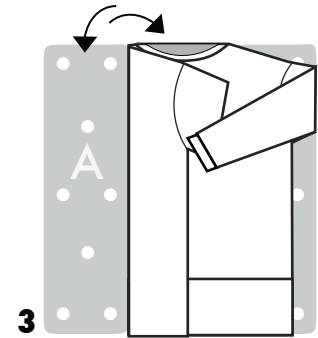
FOLD SWEATERS, PULLOVERS, JUMPERS, and HOODED SWEATSHIRTS



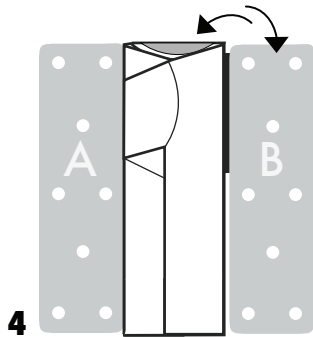
Place open sweater flat,
face down on the StarFold



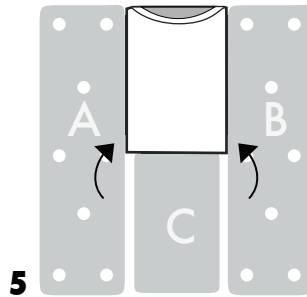
Fold bottom of the shirt
even with bottom edge of
StarFold.



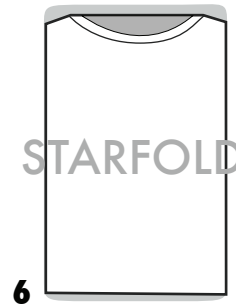
Fold **Panel A** to center and back.



Fold **Panel B** to center and back.

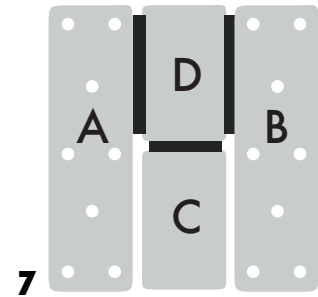


Fold **Panel C** up to center and back.



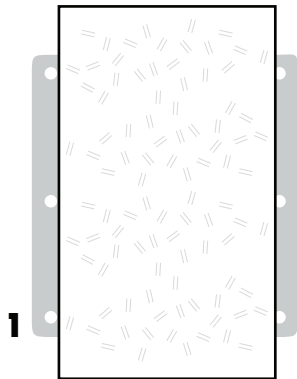
STARFOLD

You now have a perfectly
folded sweater!

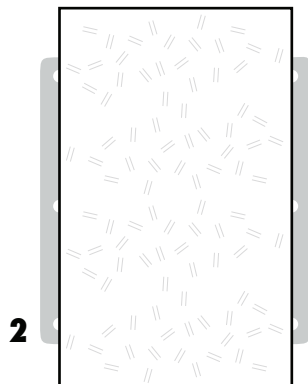


LEGEND

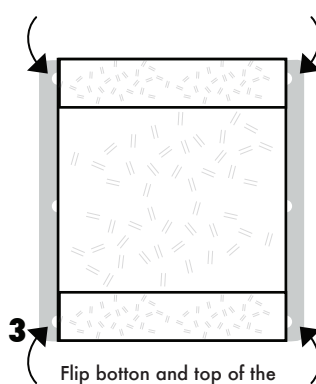
TOWELS & SHEETS



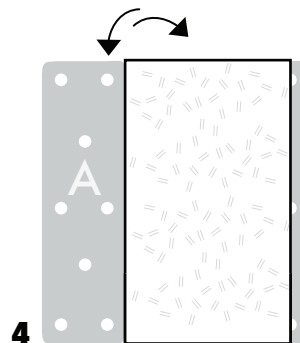
1 Open towel on board.



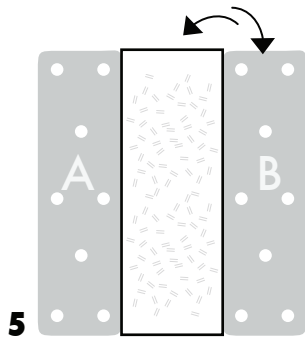
2 If the towel is oversized, make sure overlap is equal on the top and the bottom of board.



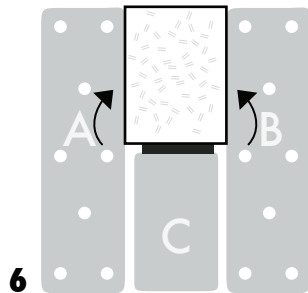
3 Flip bottom and top of the towel even with the edge of board. The towel is now completely on the board.



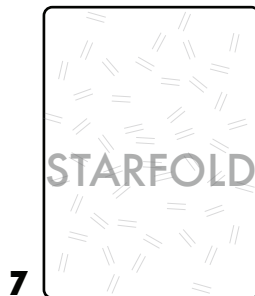
4 Flip **panel A** to center and back



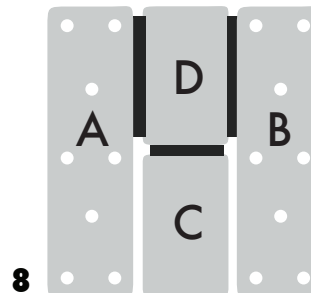
5 Flip **panel B** to center and back.



6 Flip **panel C** to up tp center and back

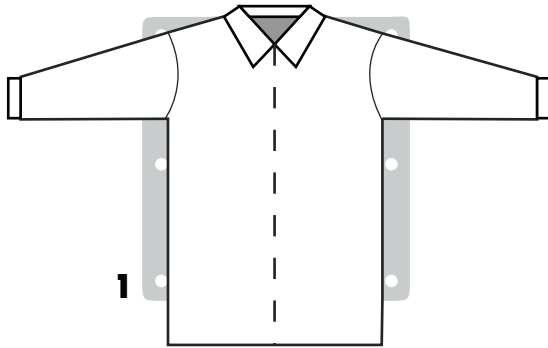


7 You now have a perfectly towell!



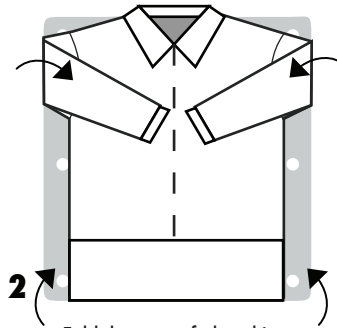
8 LEGEND

FOLD COLLARD DRESS SHIRTS



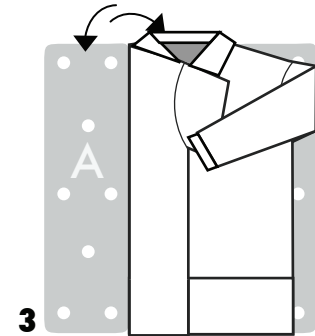
1

Place open sweater flat,
face down on the StarFold



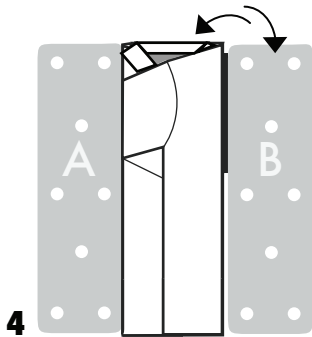
2

Fold bottom of the shirt
even with bottom edge of
StarFold.



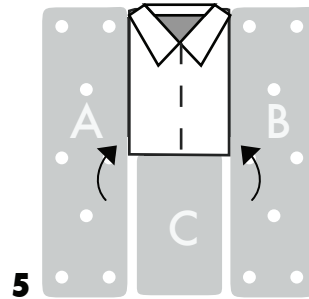
3

Fold **Panel A** to center and back.



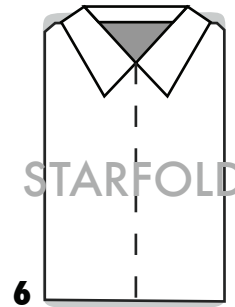
4

Fold **Panel B** to center and back.



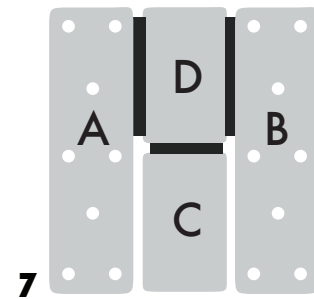
5

Fold **Panel C** up to center and back.



6

You now have a perfectly
folded collard dress shirt!



7

LEGEND